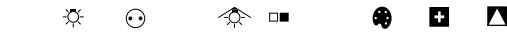




Elito 054



LV Halogen

Surface

100w LVR G53

IS054 M LVR100

Single Circuit Track

100w LVR G53

TS054 M LVR100

Three Circuit Track

100w LVR G53

TT054 M LVR100

Metal Halide

Surface

20w MHC G8.5

IS054 Q MHC020 + 153

35w MHC G8.5

IS054 Q MHC035 + 153

70w MHC G8.5

IS054 Q MHC070 + 153

35w MHR GX8.5

IS054 Q MHR035

70w MHR GX8.5

IS054 Q MHR070

Single Circuit Track

20w MHC G8.5

TS054 Q MHC020 + 153

35w MHC G8.5

TS054 Q MHC035 + 153

70w MHC G8.5

TS054 Q MHC070 + 153

35w MHR GX8.5

TS054 Q MHR035

70w MHR GX8.5

TS054 Q MHR070

Three Circuit Track

20w MHC G8.5

TT054 Q MHC020 + 153

35w MHC G8.5

TT054 Q MHC035 + 153

70w MHC G8.5

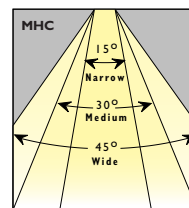
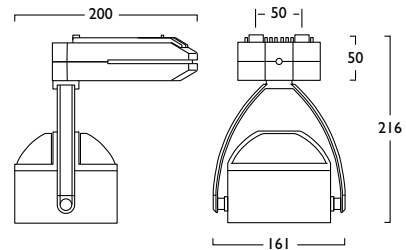
TT054 Q MHC070 + 153

35w MHR GX8.5

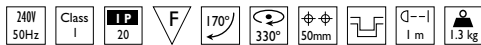
TT054 Q MHR035

70w MHR GX8.5

TT054 Q MHR070



Medium beam supplied as standard



- M Electronic dimmable transformer
- Q Electronic discharge ballast

- 1 - White 3 - Black 6 - Graphite

- Reflector**
- 283 Narrow beam (MHC) 152
- 284 Wide beam (MHC) 154

Current and Power Ratings

LVR	□	M
Lamp	Current (A)	Power (W)
1x 100W	0.46	111.0

MHC	□	Q
Lamp	Current (A)	Power (W)
1x 20W	0.10	23.8
1x 35W	0.22	44.5
1x 70W	0.36	79.0

MHR	□	Q
Lamp	Current (A)	Power (W)
1x 35W	0.22	44.5
1x 70W	0.36	79.0

Recommended Lamps

Type	Osram	Philips
LVR100	M152	427069

Type	Osram	Philips
MHC020	PB20TCW	---
MHC035	PB35TCW	202277
MHC070	PB70TCW	201676

Type	Osram	Philips
MHR035	---	204523
MHR070	---	207234

Product Codes Explained



Symbols

	12V
	Voltage & frequency
	Class I / II / III
	Ingress protection
	Suitable for flammable surface
	Plug & socket connections
	Unfused terminal block
	Fused terminal block
	Integral fuse
	Knockout size
	Tilt
	Rotation / pan
	Cut out
	Fixing centres
	Uplighting / Downlighting
	Uplighting / Downlighting
	Pressed metal construction
	Extruded aluminium construction
	Spun construction
	Die cast construction
	Injection moulding
	Minimum distance from lamp
	Decorative glass feature
	Safety glass
	Foot switch
	Supplied complete with plug
	Maximum weight kg
	Operating temperature of fascia
	Tamper proof screws
	Maximum evenly distributed load kg