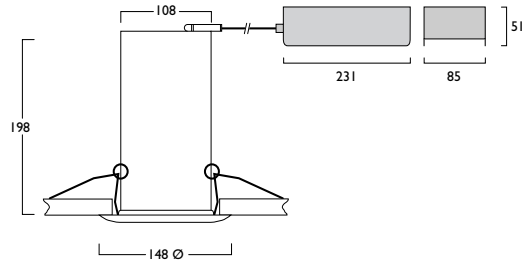




Solara Micro

Power	Type	Code	Model	PLC	PLT	Dimming	Emergency	Beam Angle
13w	PLC	G24q-1	ID979	PLC013	-	+	035	
18w	PLC	G24q-2	ID979	PLC018	-	+	035	
26w	PLC	G24q-3	ID979	PLC026	-	+	035	
32w	PLT	GX24q-3	ID979	PLT032	-	+	035	
42w	PLT	GX24q-4	ID979	PLT042	-	+	035	

240V 50Hz	Class I	IP 20	F	20mm	130mm Ø	0.5m
Max	D,F,H,J	E,G,I,K				
	0.9 kg	1.9 kg				



Gear types F, G & V must be operated through a Digital Serial Interface (p389)

- D** High frequency
- E** High frequency + Emergency
- Z** High frequency + self test Emergency
- F** High frequency digital dimming
- G** High frequency digital dimming + Emergency
- V** High frequency digital dimming + self test Emergency
- H** High frequency analogue (1-10V) dimming
- I** High frequency analogue (1-10V) dimming + Emergency
- W** High frequency analogue (1-10V) dimming + self test Emergency
- J** High frequency switch dimming
- K** High frequency switch dimming + Emergency
- Y** High frequency switch dimming + self test Emergency
- S** High frequency DALI dimming
- T** High frequency DALI dimming + Emergency
- U** High frequency DALI dimming + self test Emergency

I - White 3 - Black 6 - Graphite

Code	Finish	IP Rating
069	Flush clear	IP44
070	Flush etched	
304	Flush clear + gasket	IP65
305	Flush etched + gasket	
071	Floating etched	
074	Halo blue	
075	Halo etched	

Current and Power Ratings

PLC Lamp	Current (A)	Power (W)
1x 18W	0.09	19.5
1x 26W	0.13	26.5
2x 18W	0.20	37.5
2x 26W	0.20	51.0

PLT Lamp	Current (A)	Power (W)
1x 32W	0.16	34.5
1x 42W	0.21	46.0

Recommended Lamps

PLC Type	3000K		4000K	
	Osram	Philips	Osram	Philips
PLC018	DDE183	623331	DDE184	623348
PLC026	DDE163	623355	DDE264	623362

PLT Type	3000K		4000K	
	Osram	Philips	Osram	Philips
PLT032	DTE323	611284	DTE324	611314
PLT042	DTE423	611345	DTE424	611376



Solara Micro

Glass Options +



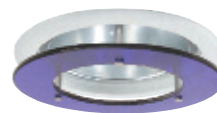
069 Flush clear (IP44)
304 Flush clear + gasket (IP65)



070 Flush etched (IP44)
305 Flush etched + gasket (IP65)



071 Floating etched

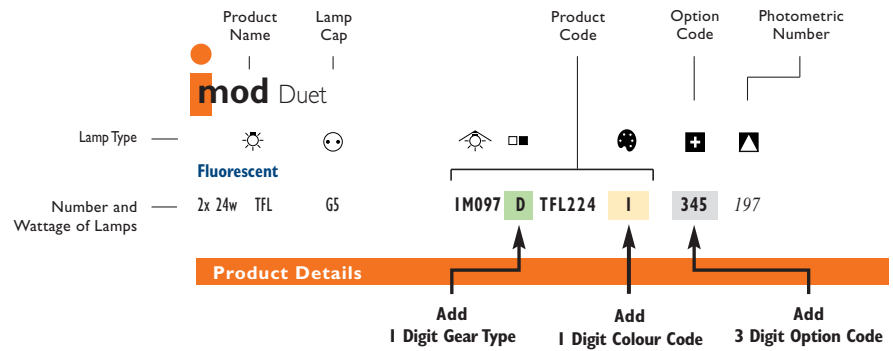


074 Halo blue



075 Halo etched

Product Codes Explained



Symbols

	12V
	Voltage & frequency
	Class I / II / III
	Ingress protection
	Suitable for flammable surface
	Plug & socket connections
	Unfused terminal block
	Fused terminal block
	Integral fuse
	Knockout size
	Tilt
	Rotation / pan
	Cut out
	Fixing centres
	Uplighting / Downlighting
	Uplighting / Downlighting
	Pressed metal construction
	Extruded aluminium construction
	Spun construction
	Die cast construction
	Injection moulding
	Minimum distance from lamp
	Decorative glass feature
	Safety glass
	Foot switch
	Supplied complete with plug
	Maximum weight kg
	Operating temperature of fascia
	Tamper proof screws
	Maximum evenly distributed load kg